

## TA5 Thermal Anemometer

A choice of helpful features to ensure fast, accurate measurements from simple spot checks to full diagnostic testing. All at a very affordable price.

- Automatic temperature compensation
- Lightweight, compact and easy to use
- Best probe yaw and pitch characteristics available
- Free traceable calibration certificate included
- HVAC commissioning, process and environmental monitoring
- Supplied with protective case
- Telescopic probe extends up to 930mm

### TA5

Digital display of air velocity and airstream temperature in m/sec, °C or ft/min, °F. Multiple range selector ensures maximum resolution across a wide velocity range. Fully specified with 99 memory storage, min/max/average and bar graph turbulent flow indicator alerting of unstable flow conditions. Choice of "All Angle" flexible probe or fixed tip .

### FEATURES

- Three velocity ranges in one meter
- Simple, interactive, backlit digital display
- Memory, min/max/average of velocity and temperature
- Review stored values
- Over range neon indicator
- Turbulent flow bar graph

### BENEFITS

- Top value – three meters for the price of one
- Client confidence with fully traceable calibration
- Accuracy and comparative values every time
- Lightweight, durable hand held convenience

### APPLICATIONS

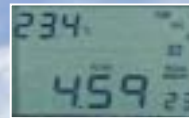
- HVAC commissioning and trouble shooting
- Clean room safety monitoring
- Grilles, louvres and flow hood balancing
- Environmental and IAQ comfort tests
- Air conditioning and ventilation duct checks
- Certified for COSHH assurance

**BEST SELLER**



TA5 Display Read Mode

TA5 Display Recall Mode



## SPECIFICATION

TA5	METRIC MODE	IMPERIAL MODE
Velocity range (switchable)	0.25 - 2m/sec 0.25 - 15m/sec 0.25 - 30m/sec	50 - 400ft/min 50 - 3000ft/min 50 - 6000ft/min
Temperature range	0-80°C	32-176°F
Accuracy @ 20°C and 1013mb	±2% FSD ±1 digit	±2% FSD ±1 digit
Temperature accuracy	±1°C ±1 digit	±2°F ±1 digit
Analogue output	0-1volt, can be scaled between 0.5v and 2v to special order	
Memory size	99 coincident velocity and temperature readings	
Probe dimensions		
compressed	194mm	7.6ins
extended	930mm	36.6ins
tip diameter	8mm	5/16ins
Cable length	1 metre	39.4in
Weight (less batteries)	450gms	16oz
Battery cells	4 type AA 1.5v cells, alkaline, rechargeable or zinc	
Battery life	15hrs (alkaline cells)	
Standard Kit	Meter with telescopic probe, Battery, Calibration certificate, Case	
Optional	'Hands free' neck strap and harness. Meter with articulating telescopic probe	

**AIRFLOW™**

Telephone: 0845 330 1047 Facsimile: 01494 461073  
E-Mail: info@airflow.co.uk Web Site: www.airflow.co.uk